

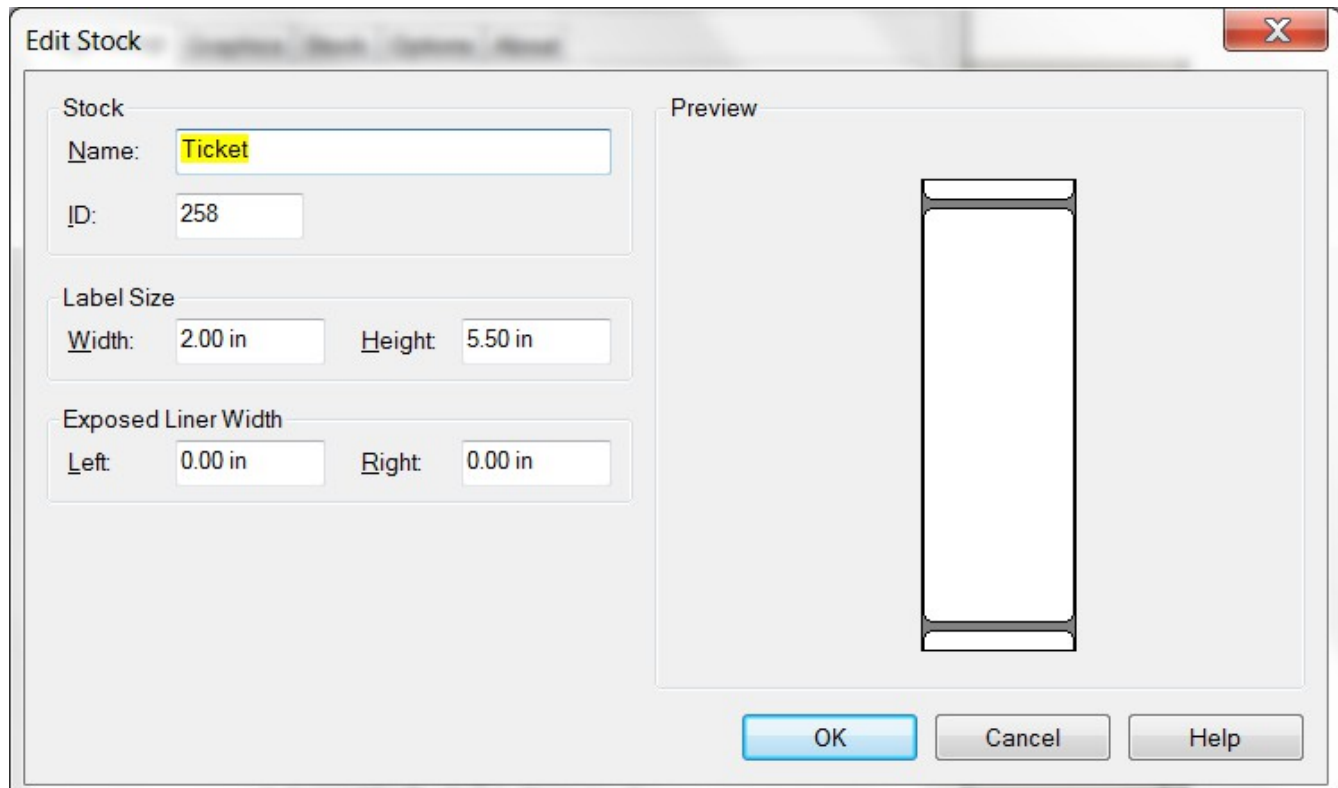
How to setup the driver and load tickets in a Godex RT200i printer

Set up the driver

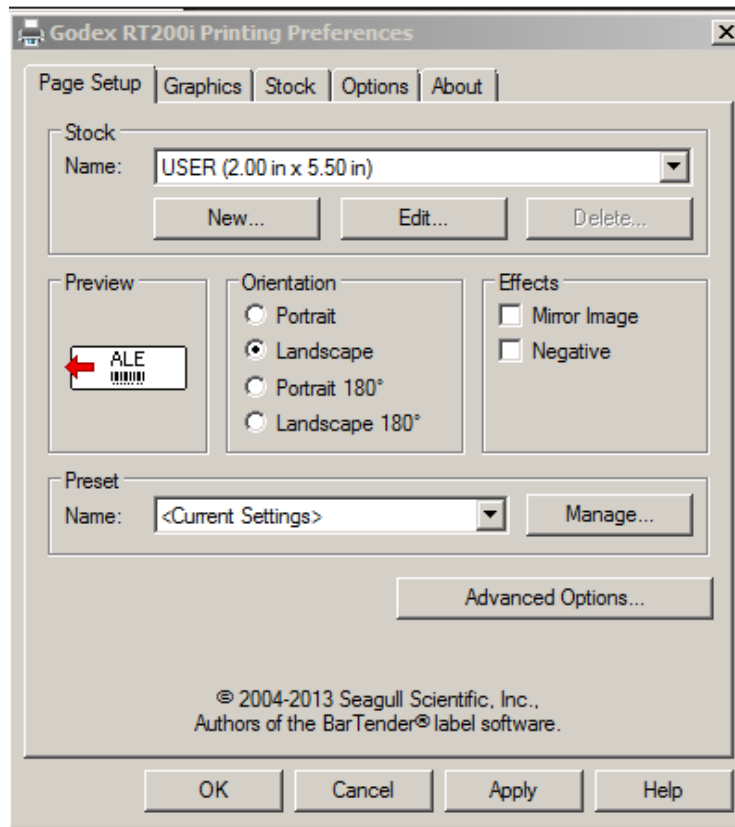
<http://www.bartenderbarcodesoftware.com/drivers/printer-driver-features.aspx?m=Godex+RT200i>

To setup your printer to print thermal tickets, make the following changes in the Seagull driver. This requires Administrator logon to the PC.

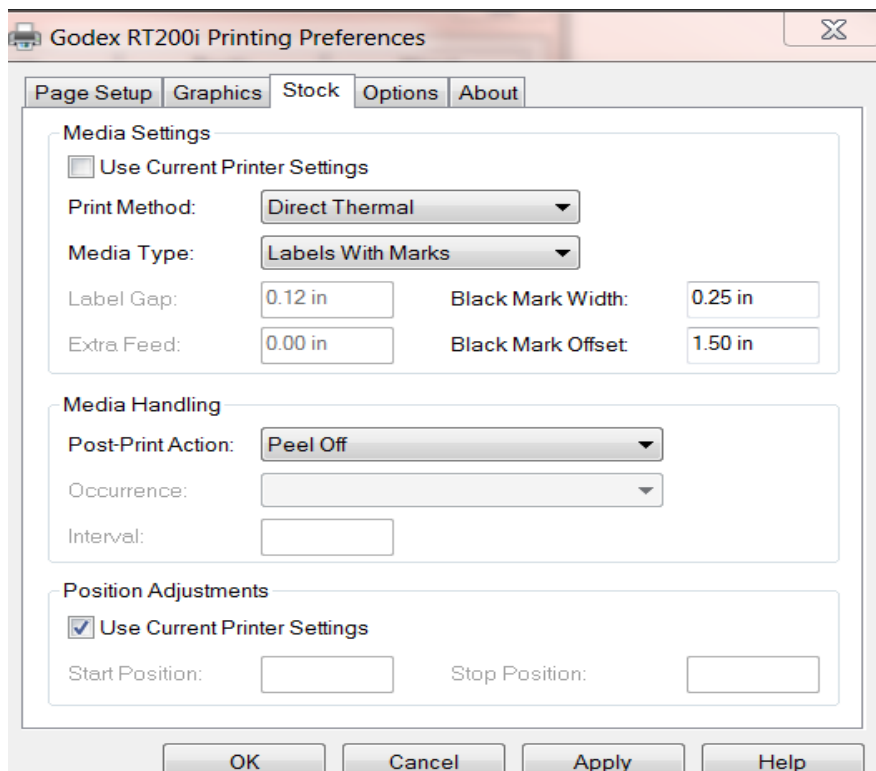
1. In Printing Preferences, create a new stock :

A screenshot of the 'Edit Stock' dialog box. The dialog has a title bar with 'Edit Stock' and a close button. It contains several input fields: 'Name' with 'Ticket', 'ID' with '258', 'Label Size' with 'Width: 2.00 in' and 'Height: 5.50 in', and 'Exposed Liner Width' with 'Left: 0.00 in' and 'Right: 0.00 in'. On the right side, there is a 'Preview' area showing a vertical rectangular ticket. At the bottom, there are three buttons: 'OK', 'Cancel', and 'Help'.

2. Set the orientation to Landscape:



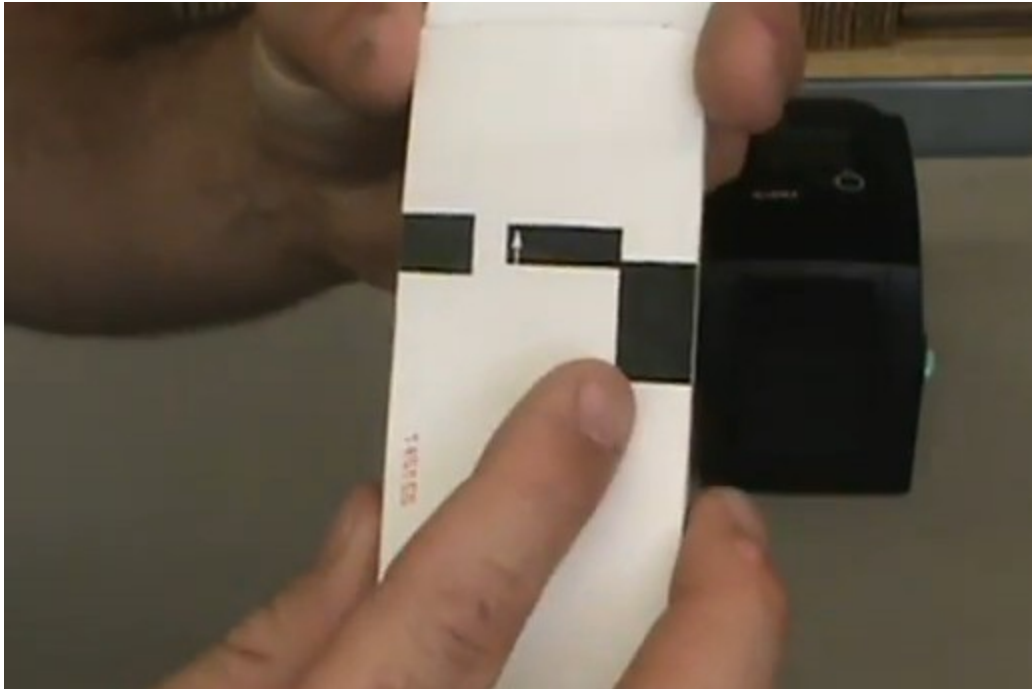
3. Change the stock tab to these values:



4. Go to the Driver Properties, Advanced tab, Printing Defaults. Make the same changes again.

Loading tickets:

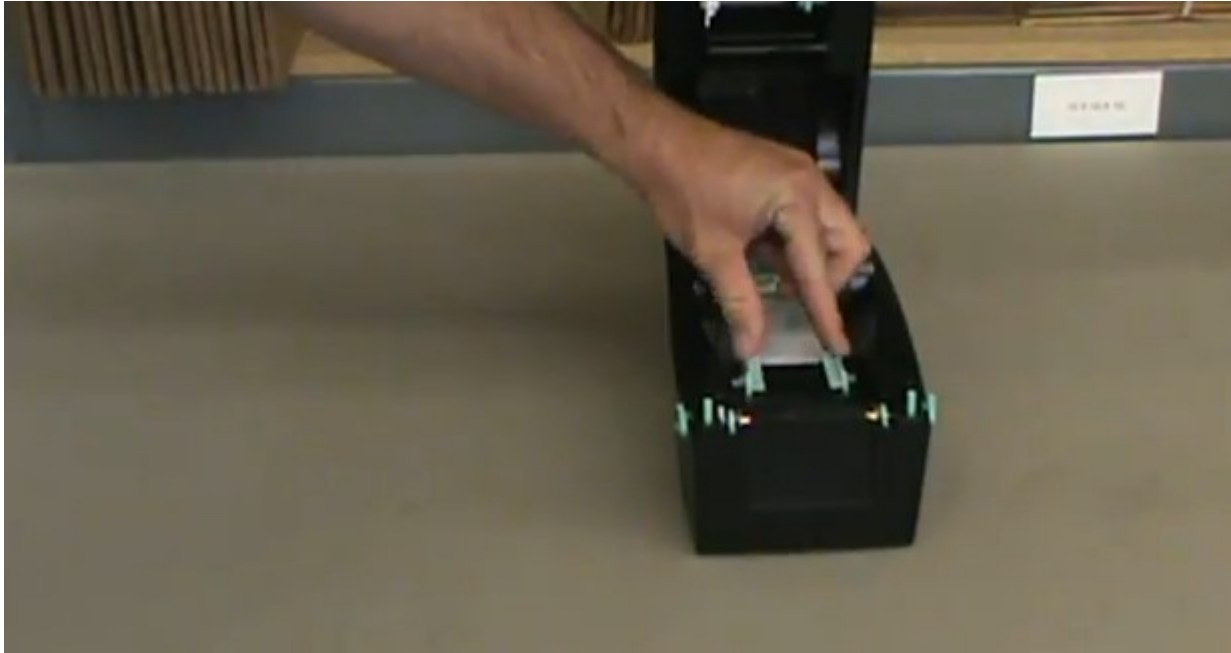
1. On the bottom of the tickets you will see a black mark for calibration and an arrow which is pointing in the direction in which the tickets should be feeding through the printer. Make sure that side is facing down and the blank side is facing up.



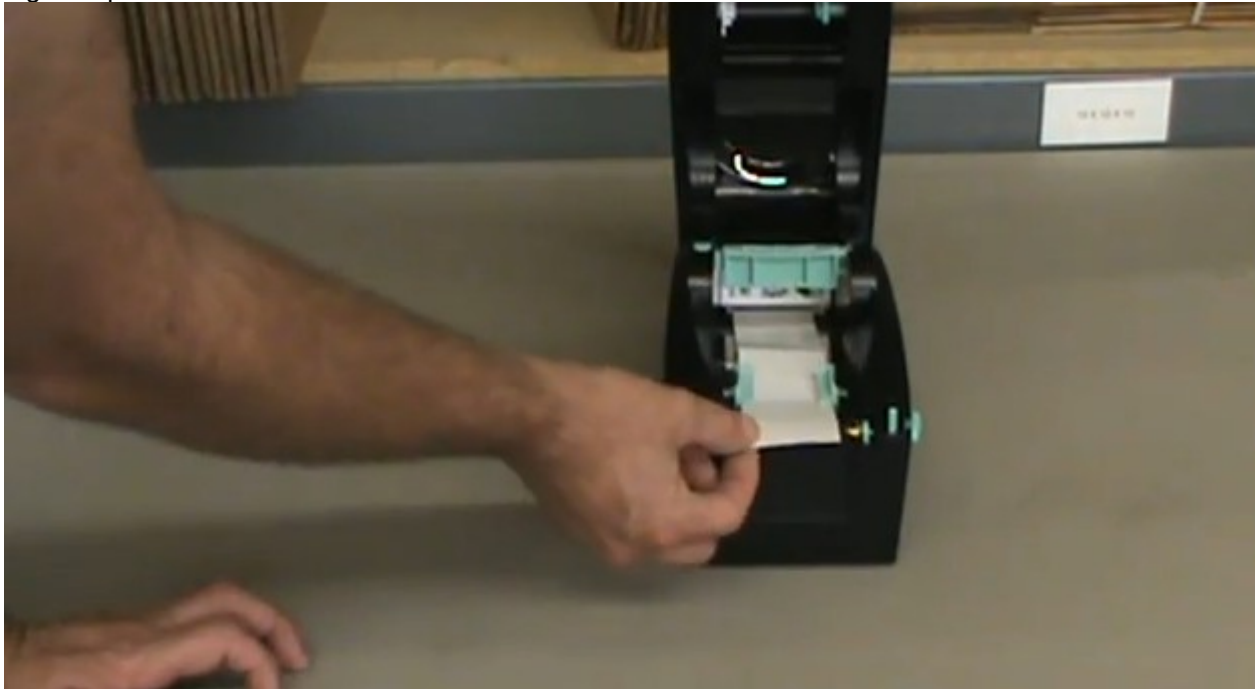
2. Load the ticket stock in the slot in the back of the printer.



3. Unlatch the printhead mechanism as shown.



4. Open up the ticket stock guides, place stock in, and secure firmly but also make sure stock can move freely through the printer.



5. Lock the mechanism in place with a bit of ticket tail hanging out, close the cover and you're done! Happy

printing!

