

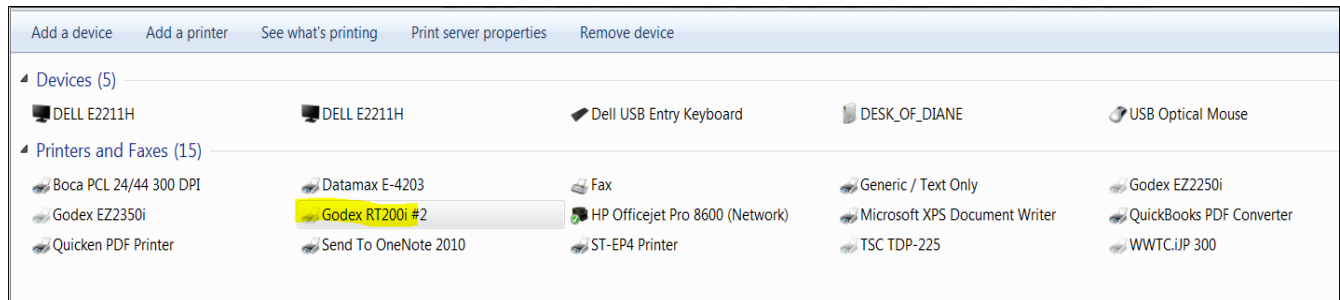
## How to setup the driver and load thermal labels in a GoDEX RT200i printer

[Click this link to download the RT200i printer driver](#)

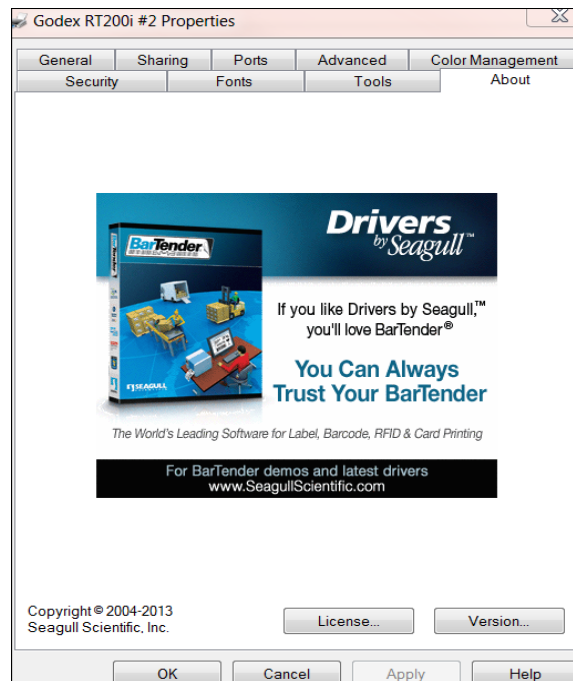
### **Now that you have downloaded the driver, follow these instructions to set up the driver**

To setup your printer to print thermal labels, make the following changes in the Seagull driver. This requires Administrator logon to the PC.

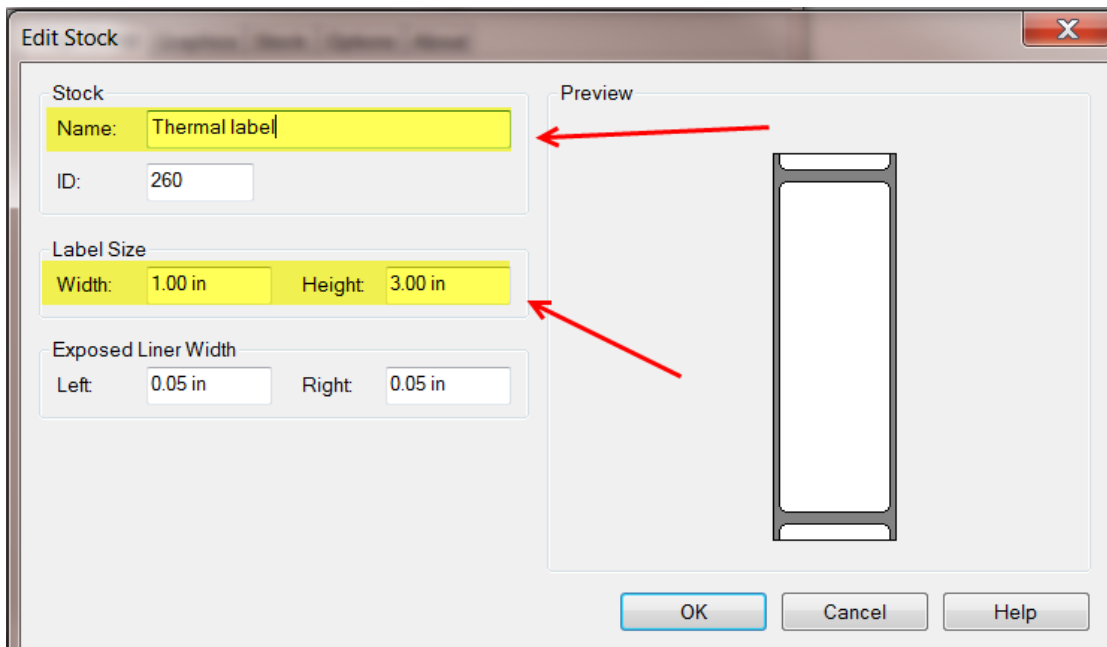
Note: Once the driver has been installed, In Windows XP click on your OS button and click on “printers and faxes”, in Windows 7, click on “Devices and printers. In the screen shot below, you'll see GoDEX RT200i #2. Your screen may or may not have the #2 designation. Don't worry about it.



1. Perform a right click on the GoDEX printer icon and choose “Printing Preferences.” This is what you'll see:

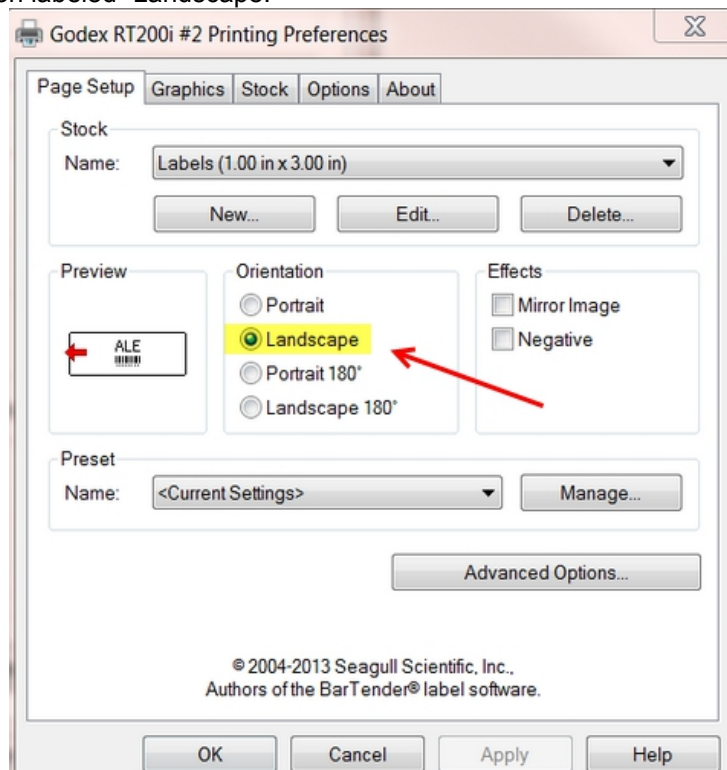


2. Click on the “General” tab then the “Preferences” button.
3. Click on the “Page Setup” tab, then click on the “New” button and create a new stock. See below:



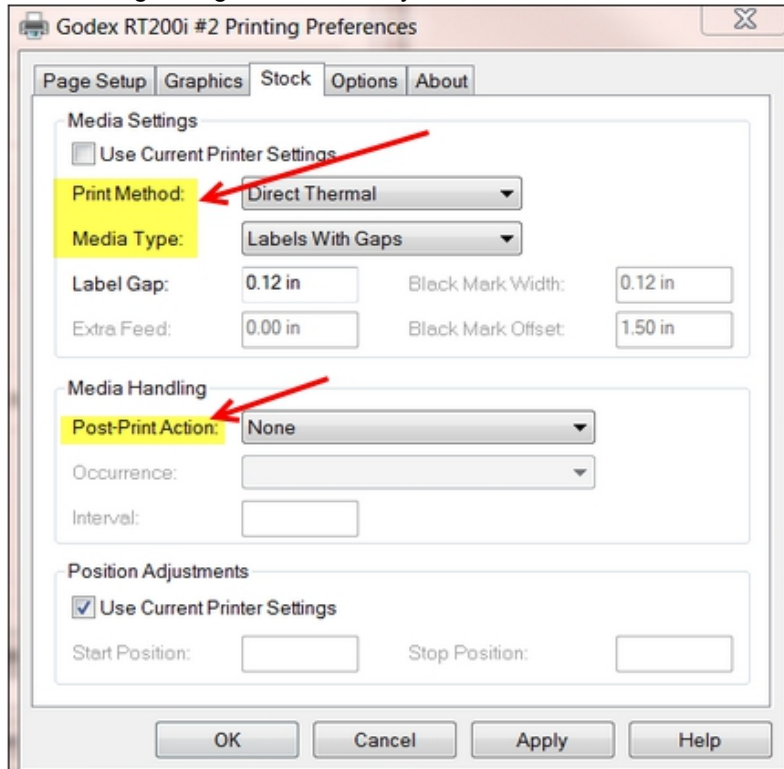
- Type in a new name called “Thermal label” like shown above.
- For this example, we have typed in 1.00 in for the width, and 3.00 in for the height, but you can type in any dimension of label you are using. Click OK.
- When you click on OK, you will be taken back to the Page Setup screen:

4. Choose the radio button labeled “Landscape.”



5. Click on the “Stock” tab.

- Make the following changes, if necessary. See screen shot below:



- Click on the “Apply” and “OK” buttons

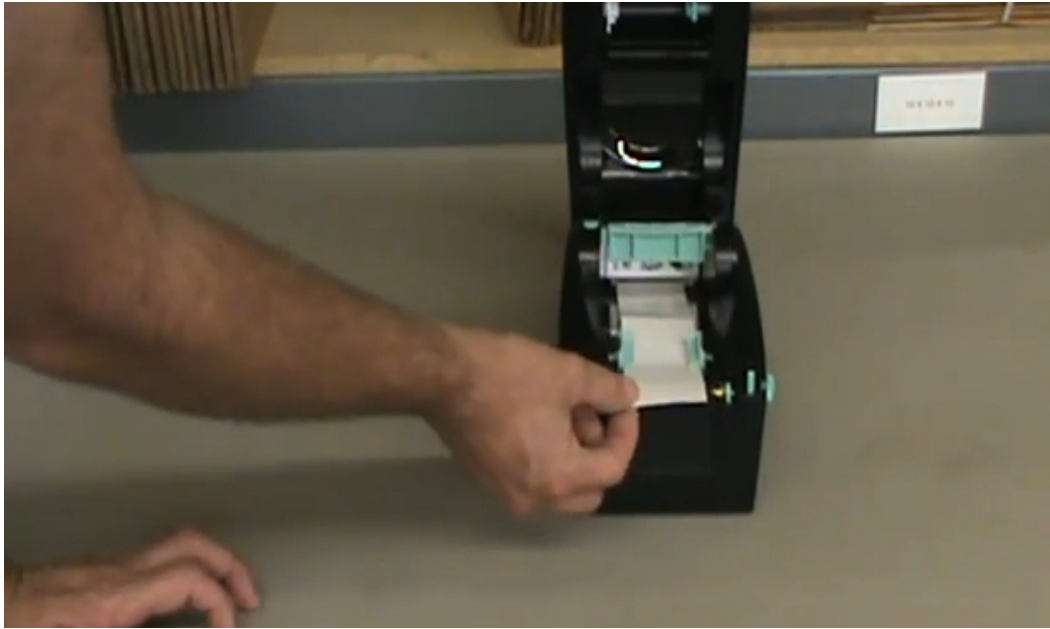
6. Go to the Driver properties | Advanced tab | Printing defaults. Repeat the steps explained above.

### **Loading labels**

[Here is a video link showing how to load the labels into the printer.](#)

- Fast forward to 1:48 and view until 2:37. See screen shot below:





- After loading in the label stock as explained in the video, lock the mechanism in place with a bit of label tail hanging out, close the cover and you're done! **Of course, if you need any help with any of this, please call our support line at 831-920-1254 or 831-583-0641.** Happy printing!